



Telescopic Hydraulic Gantries

SL, SBL, MBL-Series

No. 1 Choice
by Heavy Lifting
and Rigging
Professionals

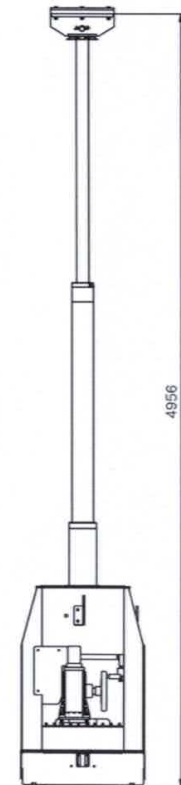
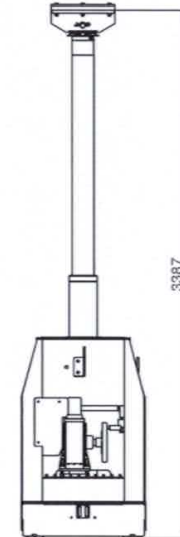
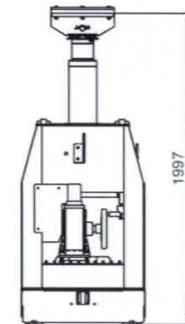
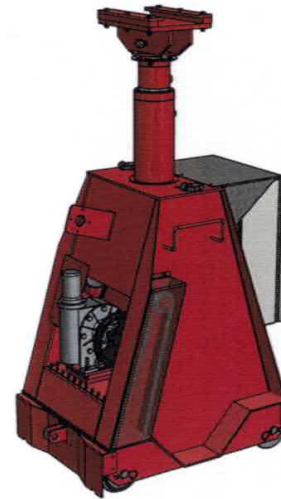
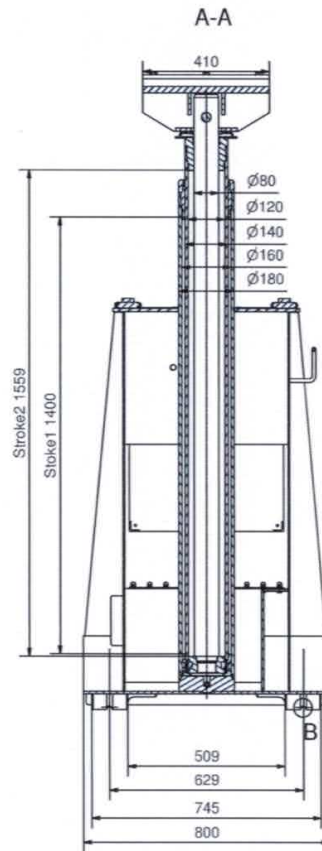
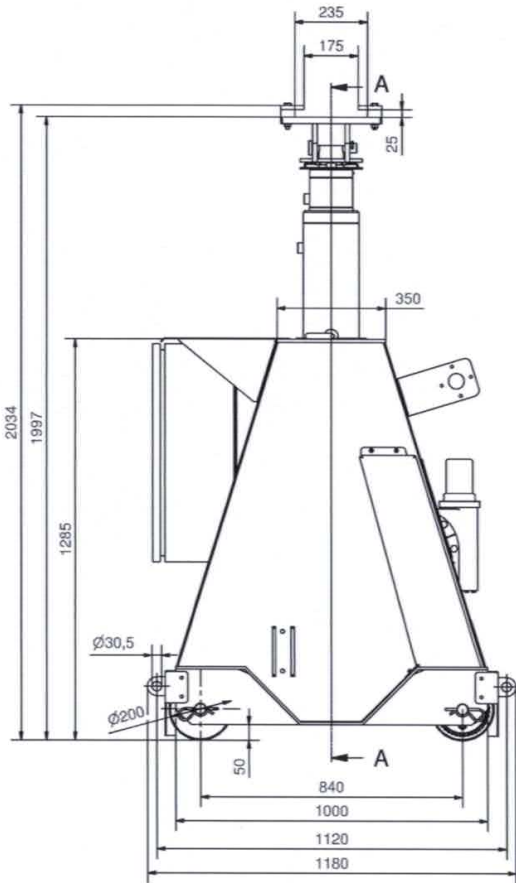
The Ultimate in
Safety and Control



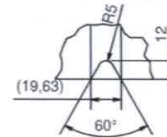


Self Weight:
Incl. Oil: 1050 kg

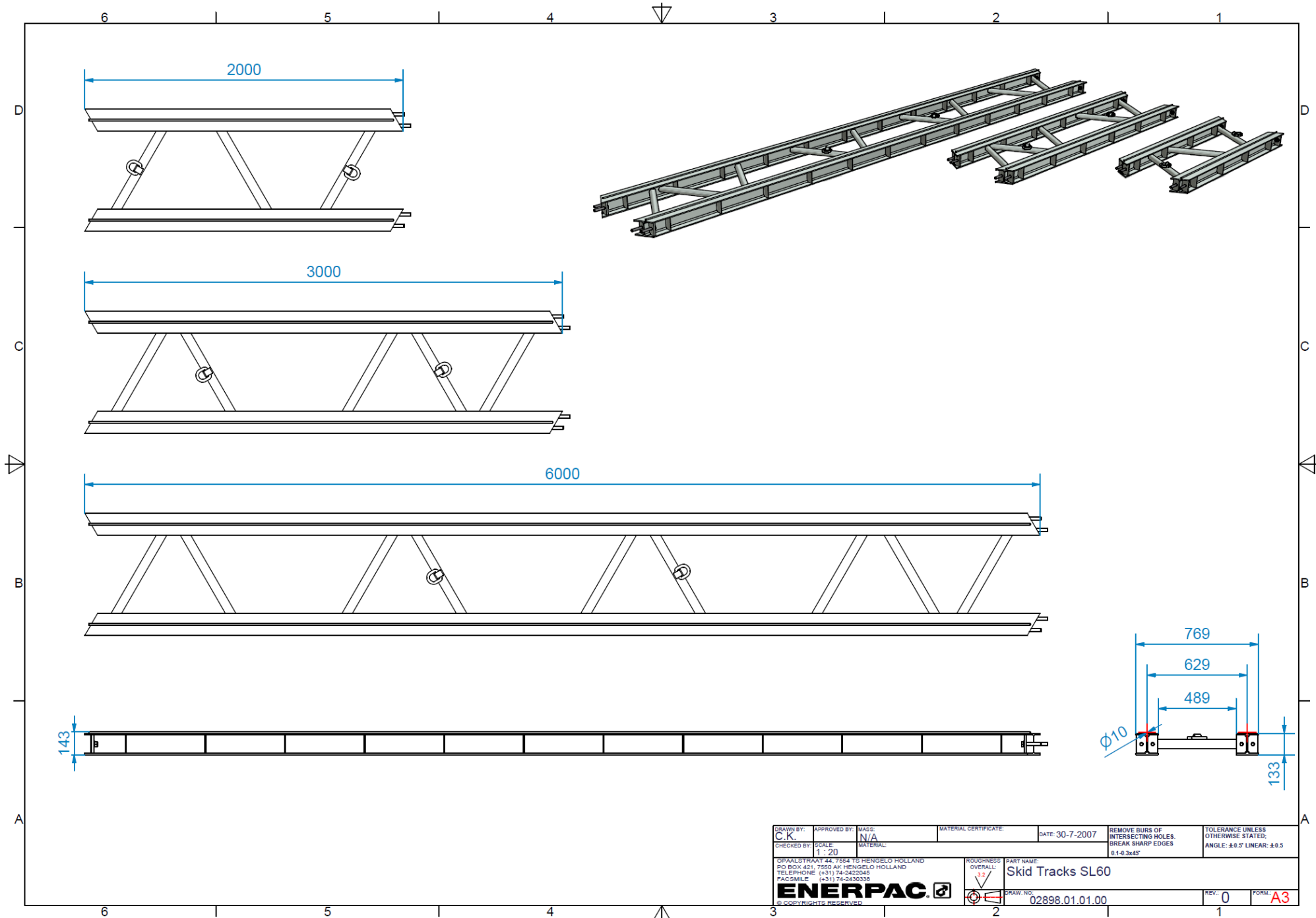
Working load:
Stage 1: 150 kN @ 75 bar
Stage 2: 150 kN @ 133 bar



B (1:2)



MODEL	TYPE	STROKE	STROKE	WORKING PRESSURE	MAXIMUM LIFTING FORCE	MAXIMUM LIFTING FORCE
CJK	HYDRAULIC	1559	1400	133 bar	150 kN	150 kN
PROFIT	APPROVED	DATE	SCALE	REVISION	REVISION	REVISION
		20.5.2006	1:10			
SUPERLIFT 60 Te			SUPERLIFT 60 Te			
ENERPAC			ENERPAC			
02972.01.00.00			02972.01.00.00			



DRAWN BY: C.K.	APPROVED BY:	MADE: N/A	MATERIAL CERTIFICATE:	DATE: 30-7-2007	REMOVE BURS OF INTERSECTING HOLES. BREAK SHARP EDGES 0.1-0.3x45°	TOLERANCE UNLESS OTHERWISE STATED: ANGLE: $\pm 0.5^\circ$ LINEAR: ± 0.5
CHECKED BY:	SCALE: 1:20	MATERIAL:				
OPAALSTRAAT 44, 7584 TG HENGELO HOLLAND PO BOX 421, 7550 AP HENGELO HOLLAND TELEPHONE (+31) 74-242045 FACSIMILE (+31) 74-243038			ROUGHNESS OVERALL: 3.2	PART NAME: Skid Tracks SL60		
ENERPAC				DRAW. NO.: 02898.01.01.00	REV: 0	FORM: A3
© COPYRIGHTS RESERVED						



1	Gantry Leg	Required
2	Skid Track	Required
3	Side Shift	Optional
4	Header Beam	Required
6	Intelli-Lift Controller	Included



Telescopic Hydraulic Gantries

SL, SBL, MBL-Series

No. 1 Choice
by Heavy Lifting
and Rigging
Professionals

The Ultimate in
Safety and Control

